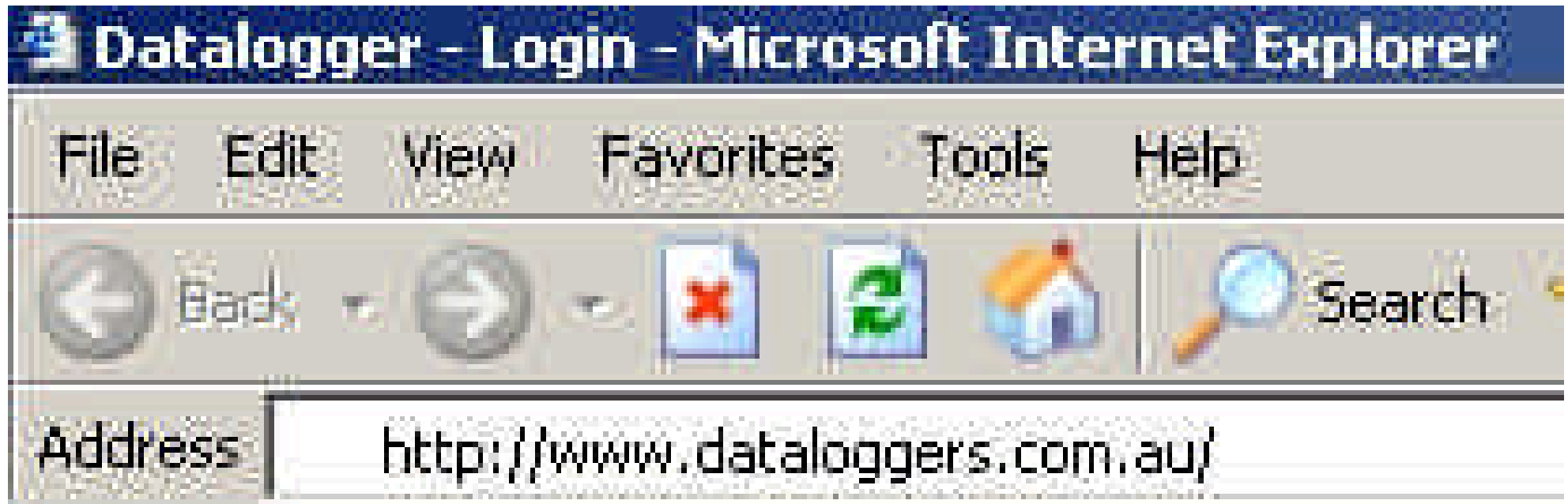


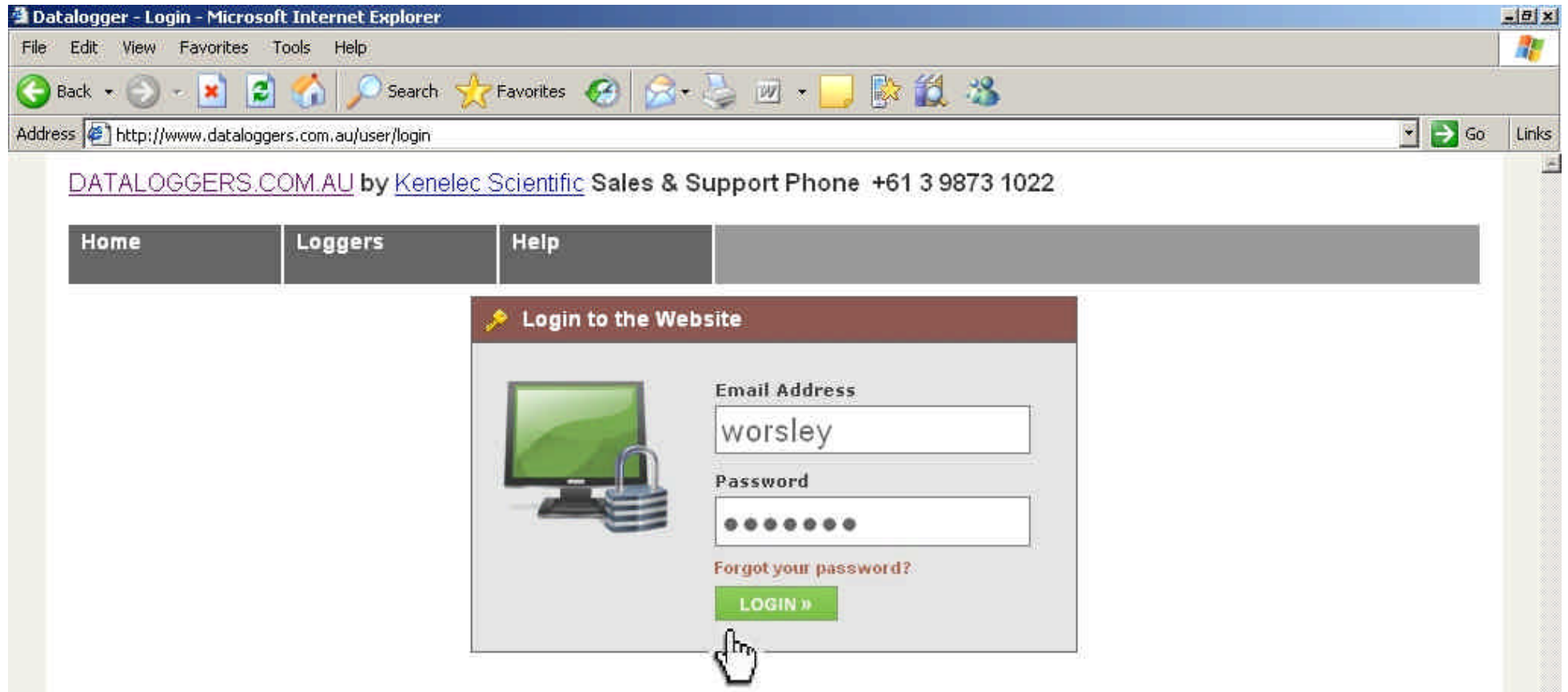
**Open up a Web Browser (Internet Explorer, Firefox etc)
Establish that you have web access (for example goto google.com)**

Now goto <http://www.dataloggers.com.au/>



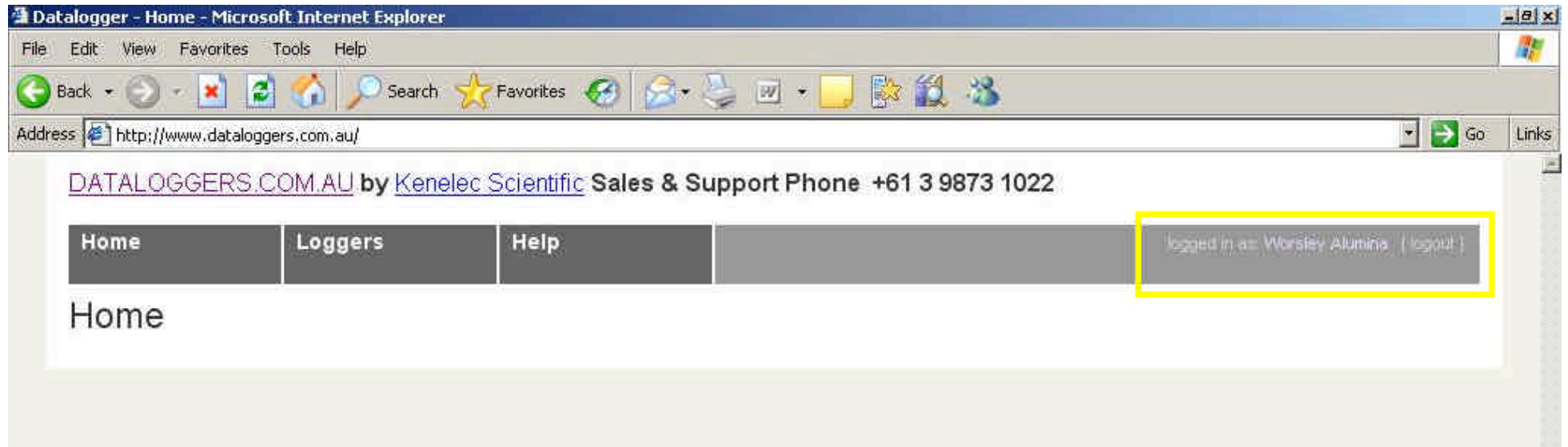
This login page will come up

**Enter XXXXX as the Email Address and
Enter XXXXX as the Password then click LOGIN**



Your Browser screen should now look like this

Note: Top right corner in yellow indicating who you are logged in as



If you can't login, two problems may be causing this to happen

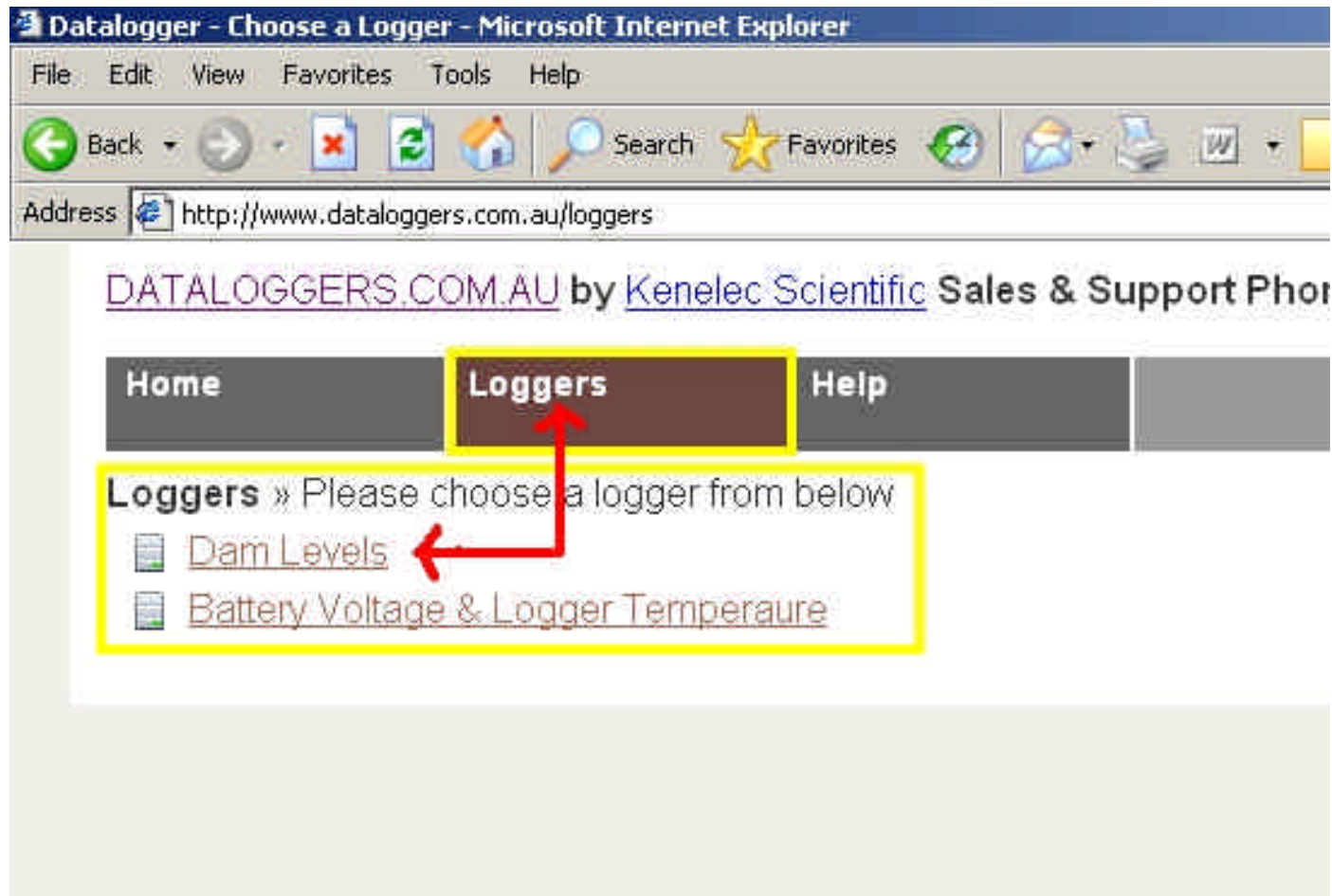
- 1. Cookies not enabled on your browser**
- 2. Your login details have been changed**

Refer to Trouble Shooting & Configuration Changes on page 12

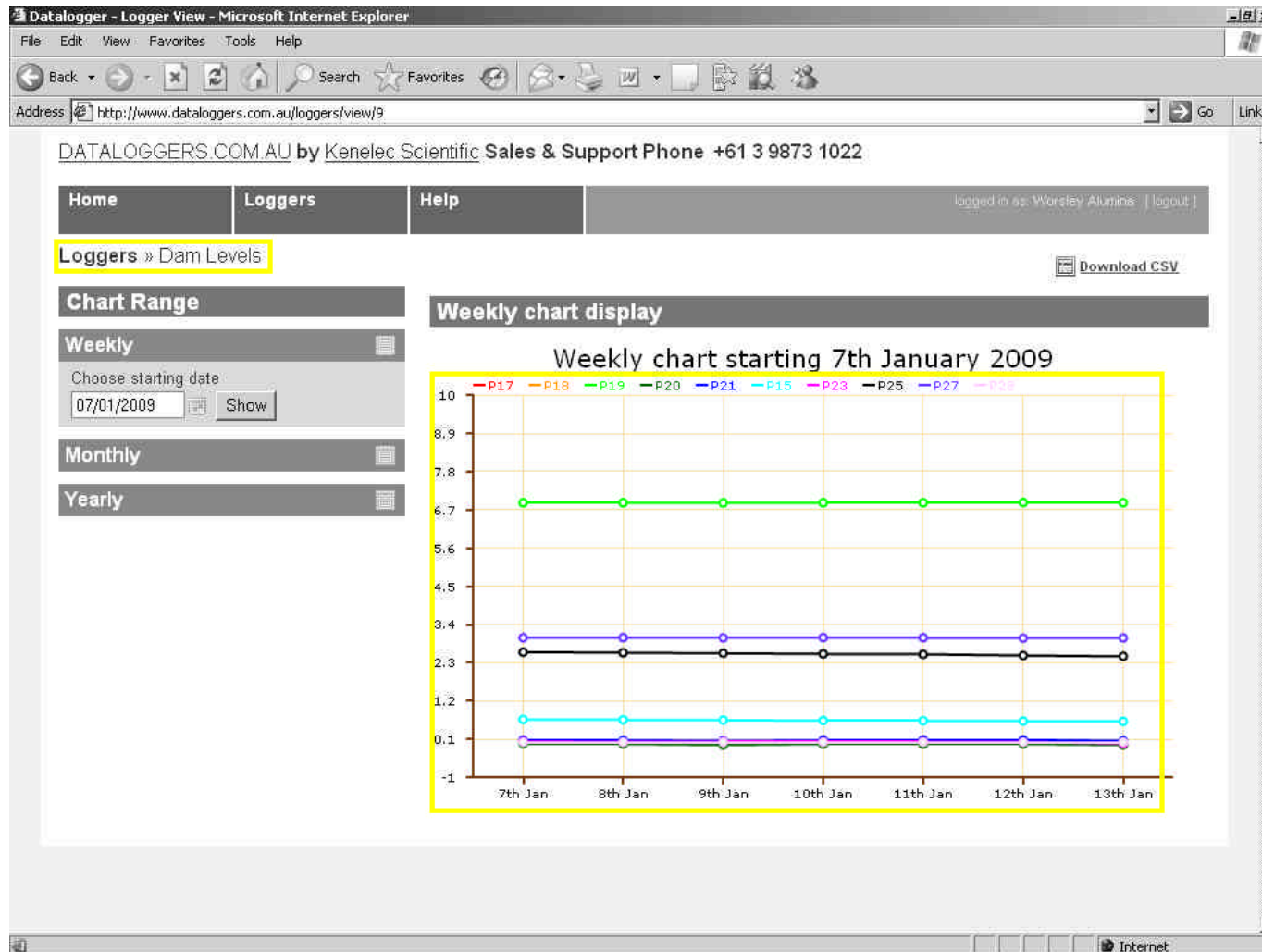
Click on the Loggers Menu

A selection of Loggers will come up

For demonstration purposes click on “ Dam Levels “

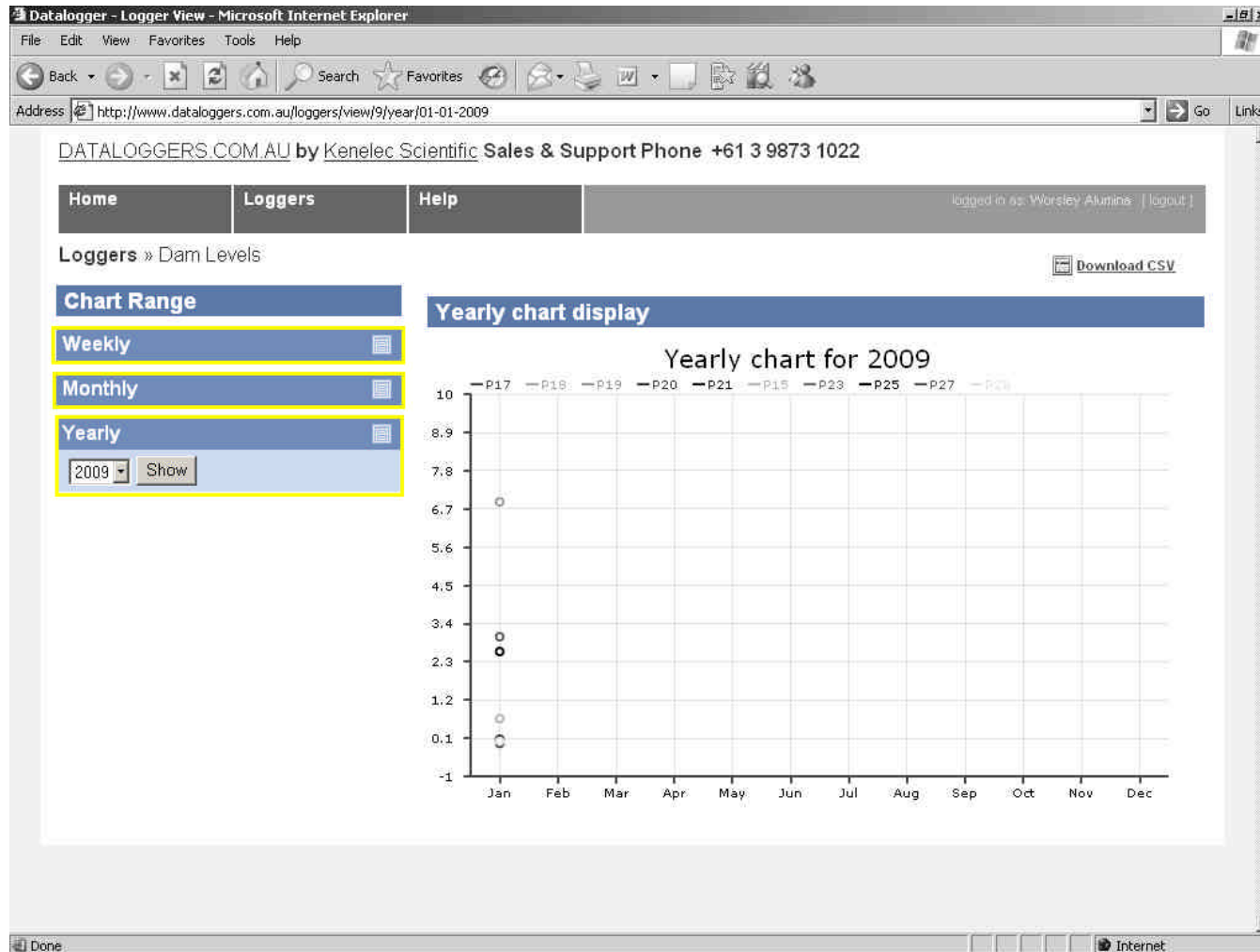


The following screen should come up
This is the default view Weekly

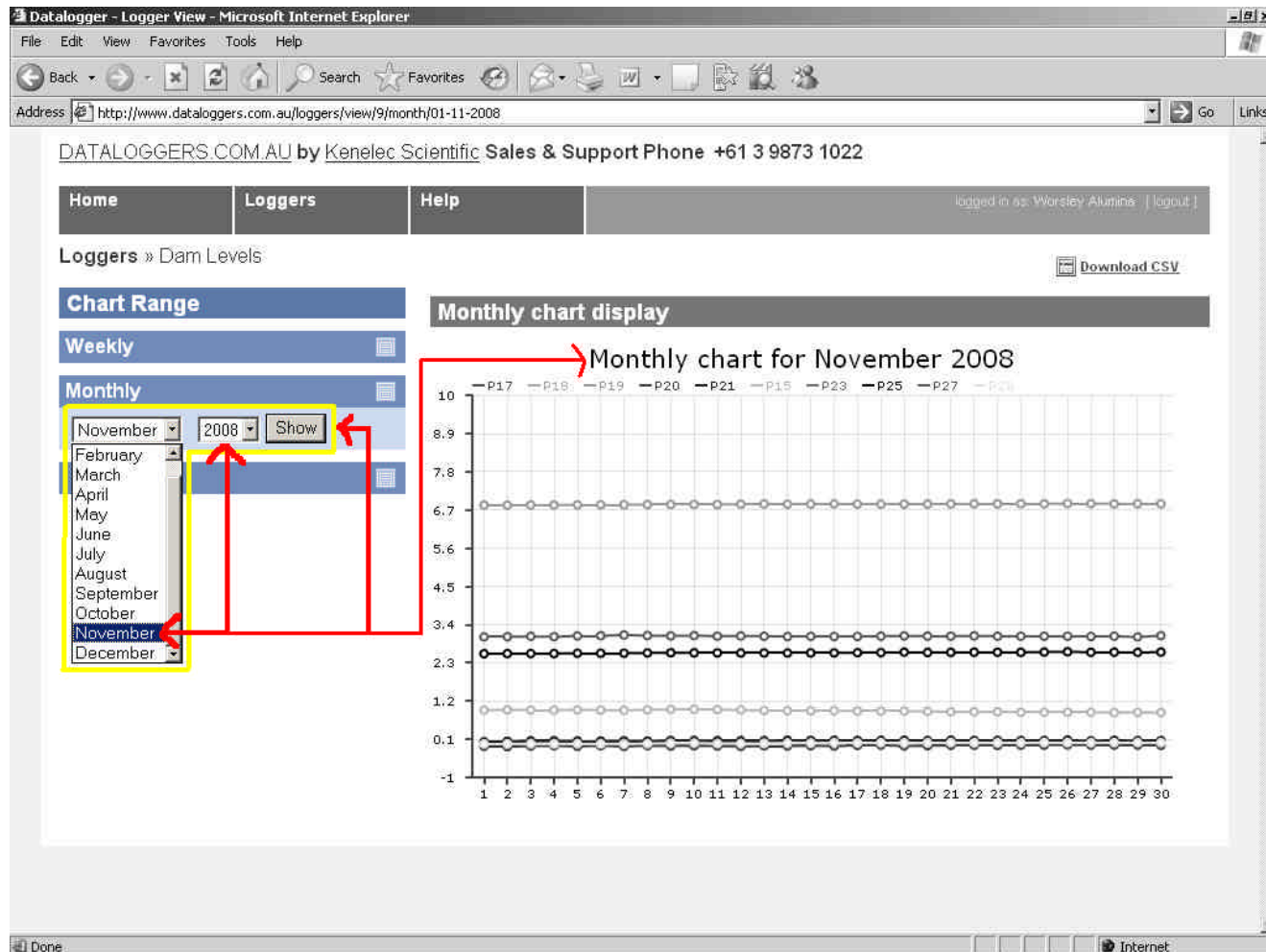


There are three view modes

To select a mode click on either Weekly, Monthly or Yearly



**This example shows how to view monthly data
From the drop down box select the desired month and year
then click SHOW**



To view weekly data follow the image below for instructions

Datalogger - Logger View - Microsoft Internet Explorer

File Edit View Favorites Tools Help

Address http://www.dataloggers.com.au/loggers/view/9

DATALOGGERS.COM.AU by Kenelec Scientific Sales & Support Phone +61 3 9873 1022

Home Loggers Help logged in as: Worleley Alumina | logout

Loggers » Dam Levels Download CSV

Chart Range

Weekly

Choose starting date

07/01/2009 Show

Monthly

Yearly

January 2009

M	T	W	T	F	S	S
29	30	31	1	2	3	4
5	6	7	8	9	10	11
12	13	14	15	16	17	18
19	20	21	22	23	24	25
26	27	28	29	30	31	

Weekly chart display

Weekly chart starting 7th January 2009

P17 P18 P19 P20 P21 P15 P23 P25 P27 P29

Date	P17	P18	P19	P20	P21	P15	P23	P25	P27	P29
7th Jan	6.7	3.4	2.3	0.1	0.1	0.1	0.1	0.1	0.1	0.1
8th Jan	6.7	3.4	2.3	0.1	0.1	0.1	0.1	0.1	0.1	0.1
9th Jan	6.7	3.4	2.3	0.1	0.1	0.1	0.1	0.1	0.1	0.1
10th Jan	6.7	3.4	2.3	0.1	0.1	0.1	0.1	0.1	0.1	0.1
11th Jan	6.7	3.4	2.3	0.1	0.1	0.1	0.1	0.1	0.1	0.1
12th Jan	6.7	3.4	2.3	0.1	0.1	0.1	0.1	0.1	0.1	0.1
13th Jan	6.7	3.4	2.3	0.1	0.1	0.1	0.1	0.1	0.1	0.1

7th Jan 8th Jan 9th Jan 10th Jan 11th Jan 12th Jan 13th Jan

http://www.dataloggers.com.au/loggers/view/9# Internet

Downloading data to your PC (CSV / Excel Compatible)

First you need to be logged in and either viewing Weekly, Monthly or Yearly Data
You can either left click or right click on the “ Download CSV “ button top right

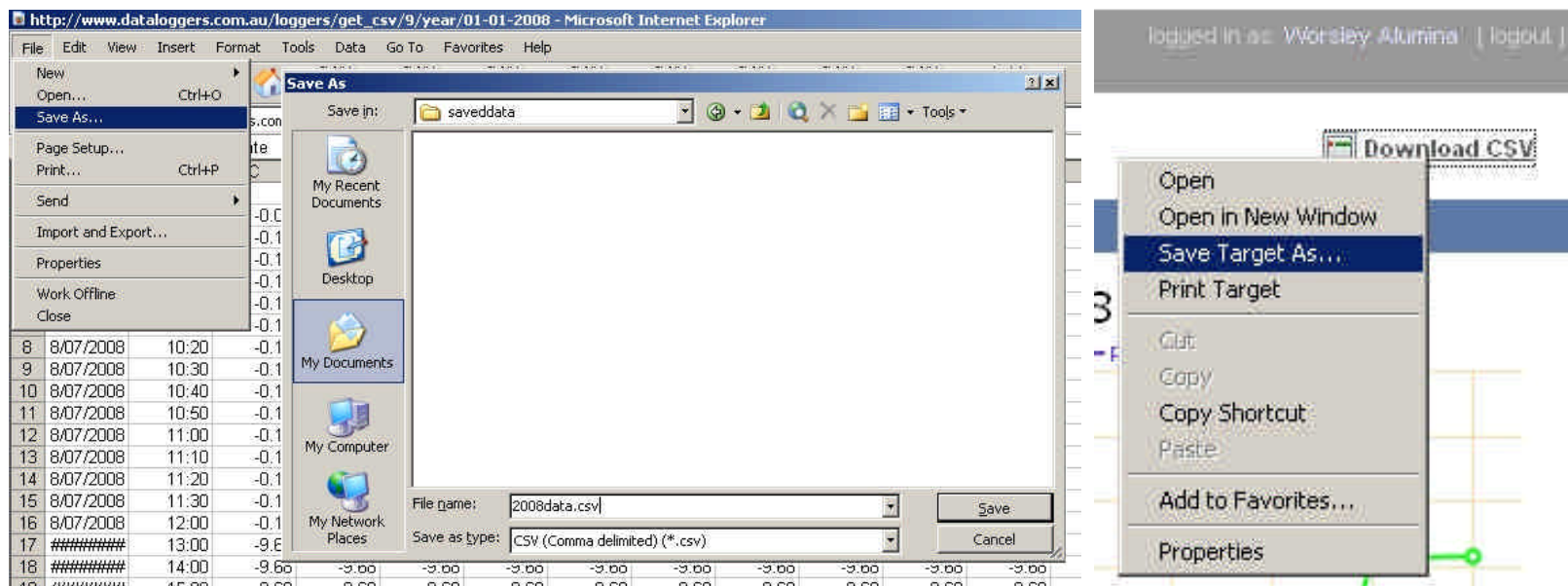
What happens next will vary with different computers and browsers

Typically left click will view this file (so you will still need to say SAVE AS in Excel)

Using right click and selecting “ Save Target As “ is a better option as it prompts you for a name and location to store your data

The example below of what may come up for left or right clicks in Internet Explorer

For additional help contact your IT department



DON'T FORGET TO BACKUP

Backups are provided for the courtesy of the subscriber. It is the sole responsibility of the subscriber to maintain their own backup of any data. Kenelec Scientific Pty Ltd is not responsible for lost data.

PLEASE NOTE:

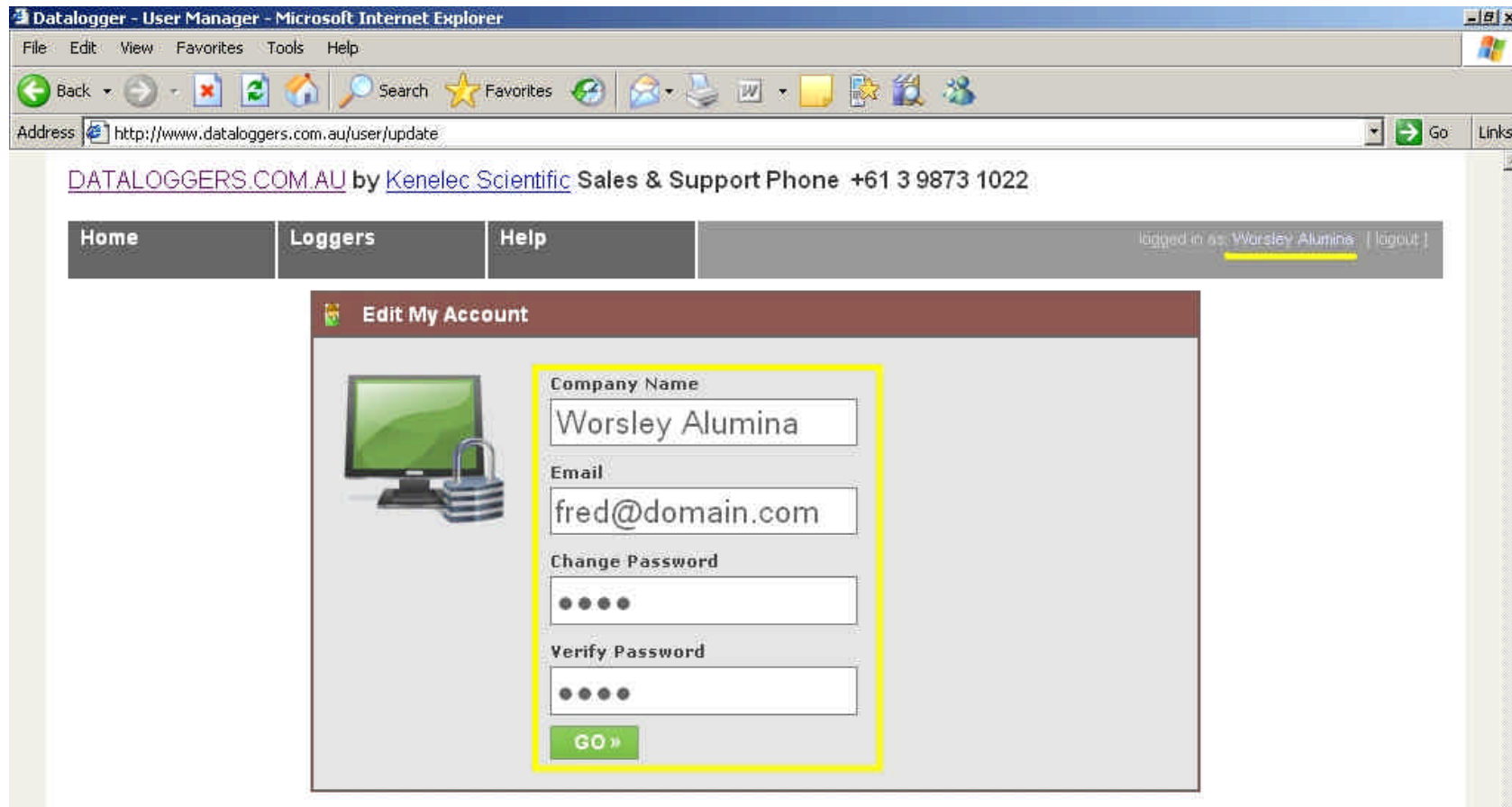
**If the Internet is down or there is any server related issues
your data is still on the CR1000 data logger in the field**

**If for any reason you are desperate and need your data, you can contact Kenelec Scientific
We can dial up using a old fashioned 56K PSTN modem (direct to your site) and down-load your data**

**Don't rely on this as your own back. PLEASE Backup your own data via the DATALOGGERS site
as explained in the previous page.**

Trouble Shooting & Configuration Changes

**To change your Login details (Email address and Password)
Click on the user name top right as shown below.
Once you have finished click on GO**



**If you have lost or forgotten your password (as shown below)
Click on “Forgot your password “**

Datalogger - Login - Microsoft Internet Explorer

File Edit View Favorites Tools Help

Back Search Favorites


Address <http://www.dataloggers.com.au/user/login> Go Links

[DATALOGGERS.COM.AU](#) by [Kenelec Scientific](#) Sales & Support Phone +61 3 9873 1022

Home Loggers Help

Login to the Website

ERROR : The email address or password is incorrect!



Email Address

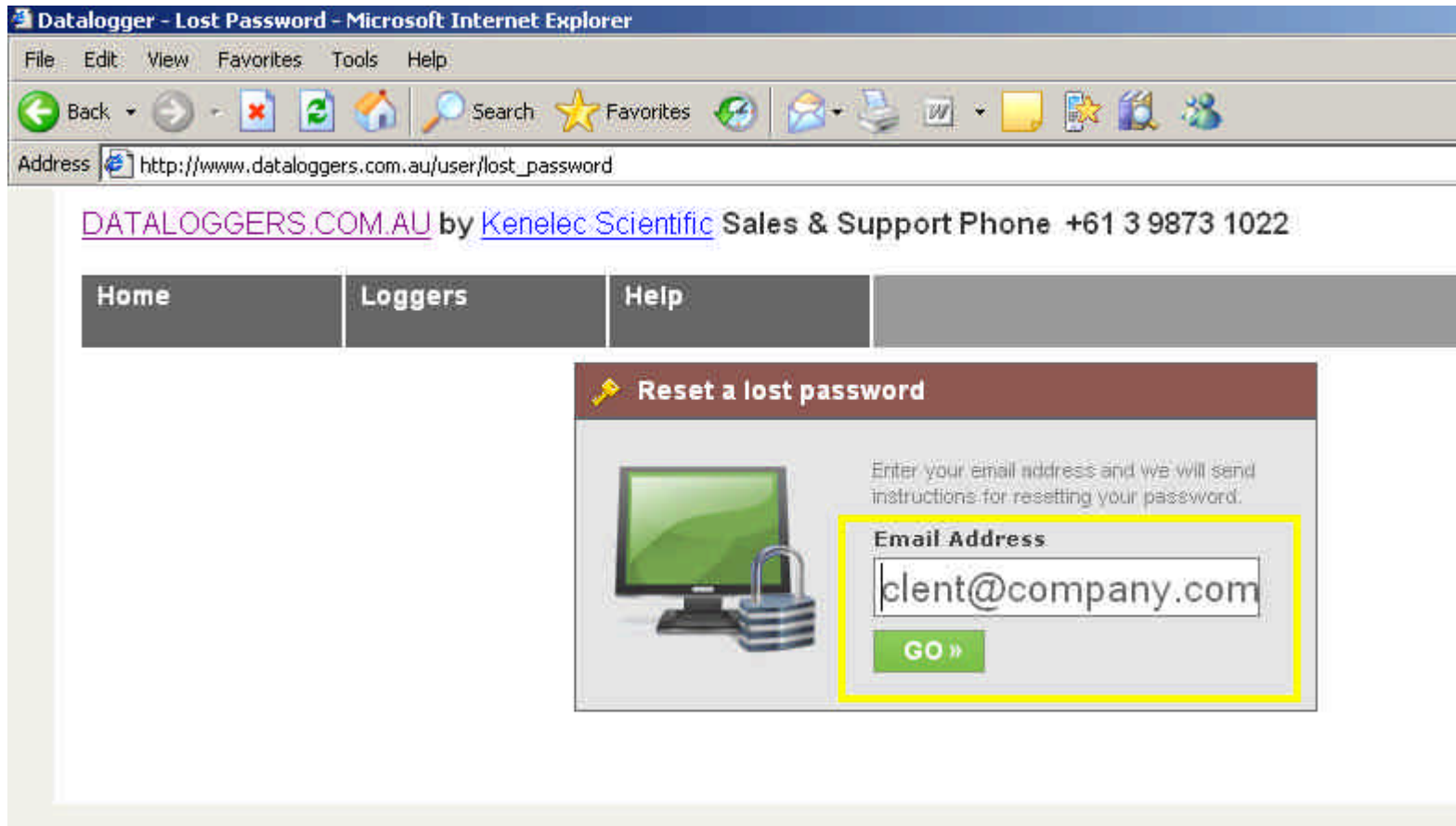
Password

[Forgot your password?](#)

LOGIN »

Enter the email address you use to login then click GO

Please note : If you have not changed your login from “worsley” to a valid Email address this feature won’t work

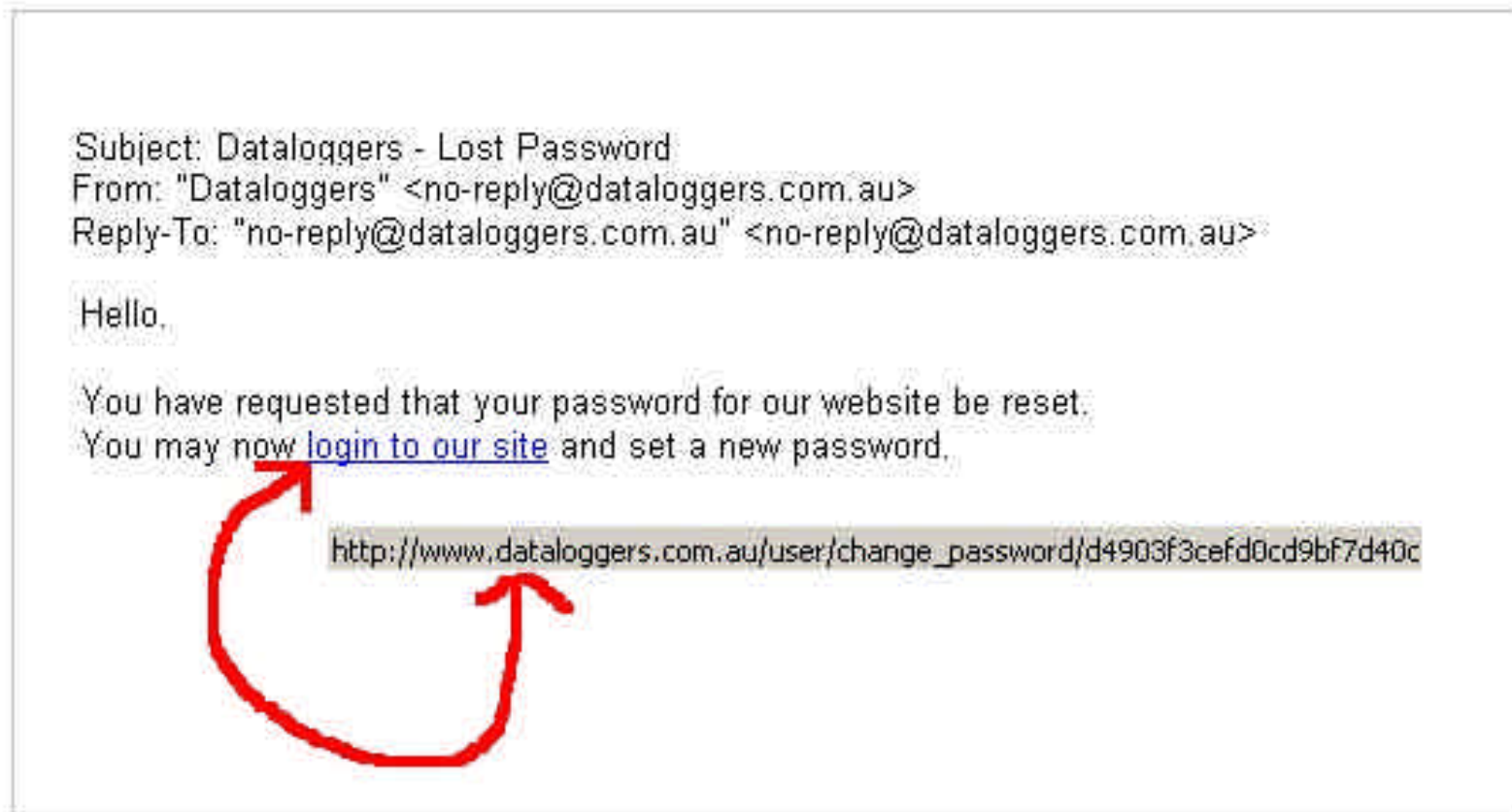


The next page will look like this.

The screenshot shows a Microsoft Internet Explorer browser window with the title "Datalogger - Lost Password - Microsoft Internet Explorer". The address bar displays "http://www.dataloggers.com.au/user/sent_password/demo". The page content includes a navigation menu with "Home", "Loggers", and "Help" buttons. A prominent message box titled "Reset Password Email Sent" (with a key icon) contains the text: "Information on resetting your password has been emailed to you at: [REDACTED]. Please check your email and click on the link that has been sent to you." To the left of the text is an icon of a computer monitor and a padlock.

**Check your Email you should get a message that looks like this
If you don't want to reset the password just delete the email**

Click on the link "login to our site"



Enter your new password then click on GO
Click on Home top left to login with your new details.

The screenshot shows a Mozilla Firefox browser window with the title "Datalogger - User Manager - Mozilla Firefox". The address bar contains the URL: http://www.dataloggers.com.au/user/change_password/873b48718fcdca6e08597fe5819a0756. The browser's toolbar includes "File", "Edit", "View", "History", "Bookmarks", "Tools", and "Help". The page content features a navigation menu with "Home", "Loggers", and "Help" buttons. Below the menu is a banner for "DATALOGGERS.COM.AU by Kenelec Scientific Sales & Support Phone +61 3 9873 1022". The main content area displays a "Change Your Password" form with a yellow border. The form includes a "Change Password" field, a "Verify Password" field, and a green "GO »" button. To the left of the form is an illustration of a computer monitor and a padlock.

If all else fails give us a call or email (Ask for Stuart)

Kenelec Scientific

www.kenelec.com.au

PH +61 3 9873 1022

FX +61 3 9873 0200

EM stuart@kenelec.com.au